



# BOULTONS



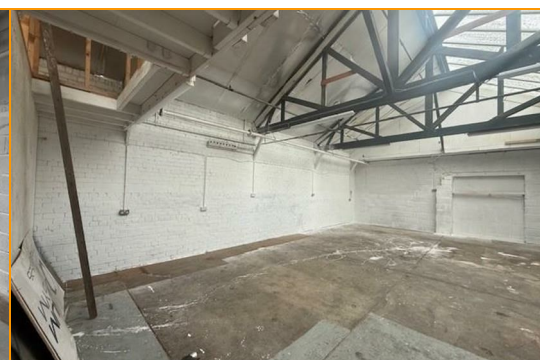
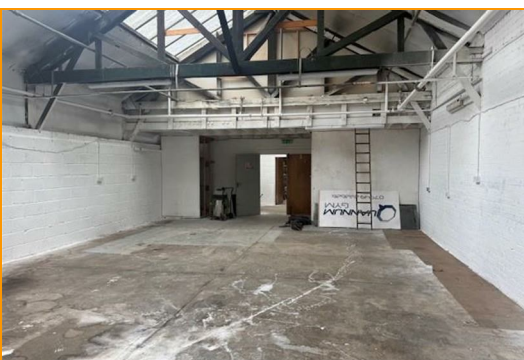
Slaithwaite, Huddersfield, HD7 5HA

£500



Upper Mills comprises a former part single part multi storey mill complex which has been sub-divided to form various self contained office, workshop and warehouse units. The available units are accessed via a shared corridor and suitable for a variety of uses being general industrial, storage, leisure or creative spaces. There is a shared central lobby area and toilet facilities.

The units benefits from solid concrete floors throughout, electric sub-meter. Externally the site benefits from extensive car parking with 24hr CCTV.





ACCOMODATION

Unit 16c 2,468 sqft

Unit 16b 1,029 sqft

Unit 16a 673 sqft

Unit 17a 677 sqft

All measurements have been taken compliant to the RICS code of measuring practice. These measurements have been taken in metric and converted to the nearest imperial equivalent.

SERVICES

The units benefit from mains electric via an electric sub-meter.

TERMS

The property is available by way of internal repairing and insuring leases or licenses for a term of years to be agreed.

RATEABLE VALUE

The property will require re-assessment for Business Rates purposes.

RENT

Price on application rents from £500 per calendar month

VAT

The price and rent is quotes exclusive of VAT which is applicable.

EPC

The energy performance certificate will be made available on request.

LEGAL FEES

Both parties will be responsible for reasonable legal costs incurred in this transaction.

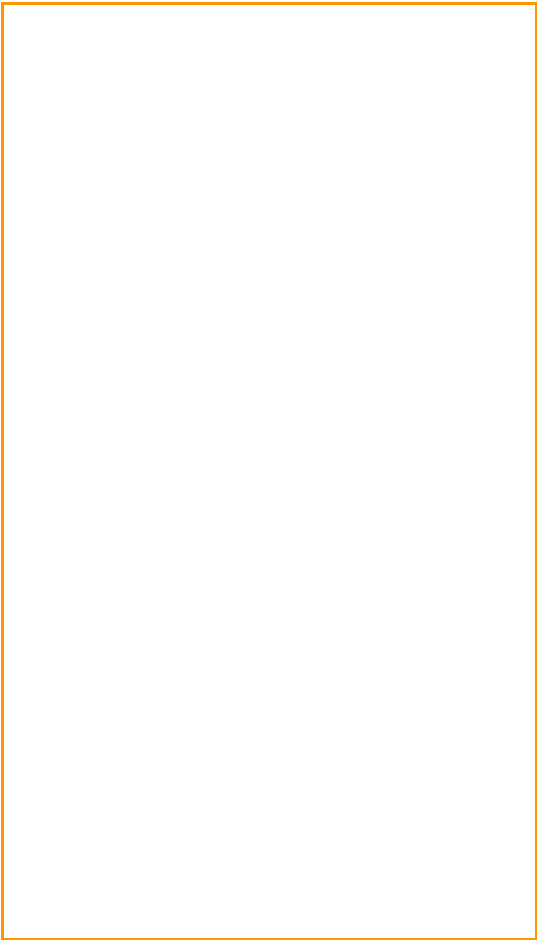
VIEWINGS

For further information and viewing arrangements please contact the sole letting agents.

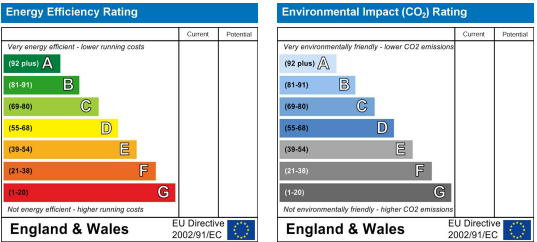
Area Map



Floor Plans



Energy Efficiency Graph



These particulars, whilst believed to be accurate are set out as a general outline only for guidance and do not constitute any part of an offer or contract. Intending purchasers should not rely on them as statements of representation of fact, but must satisfy themselves by inspection or otherwise as to their accuracy. No person in this firms employment has the authority to make or give any representation or warranty in respect of the property.